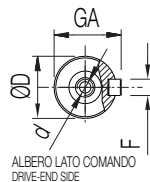
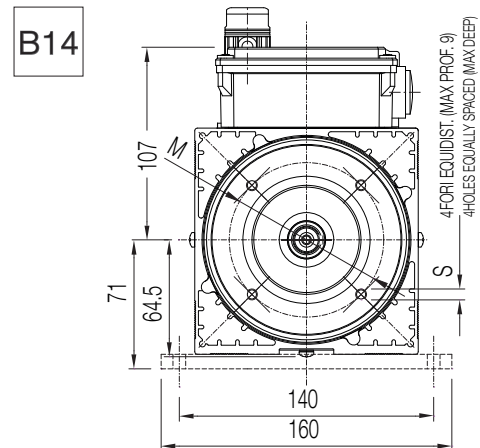
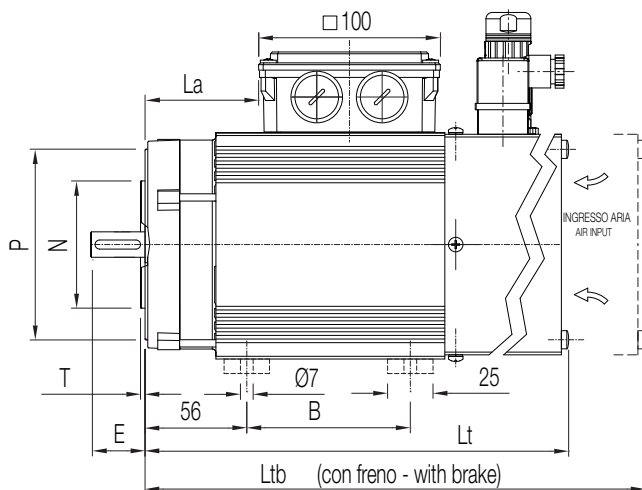
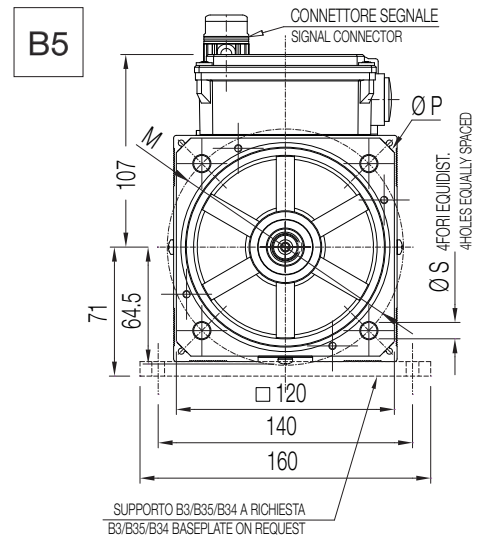
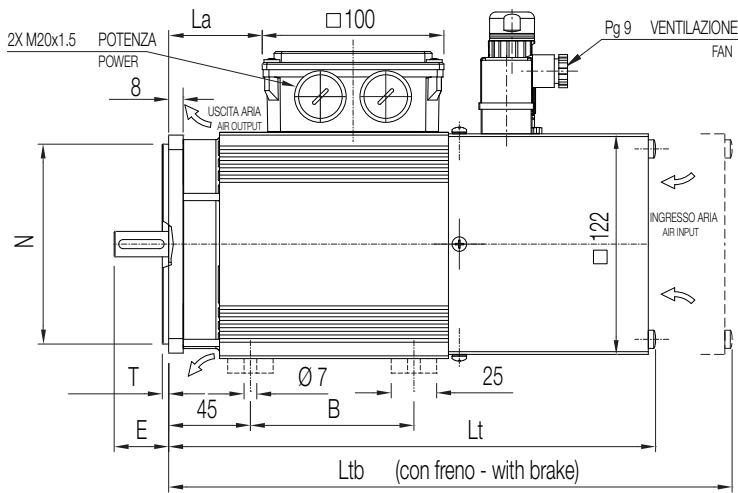


Dimensioni di ingombro VT 71

Overall dimensions VT 71

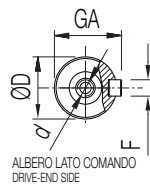
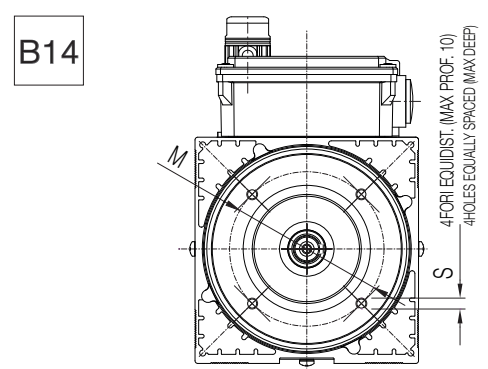
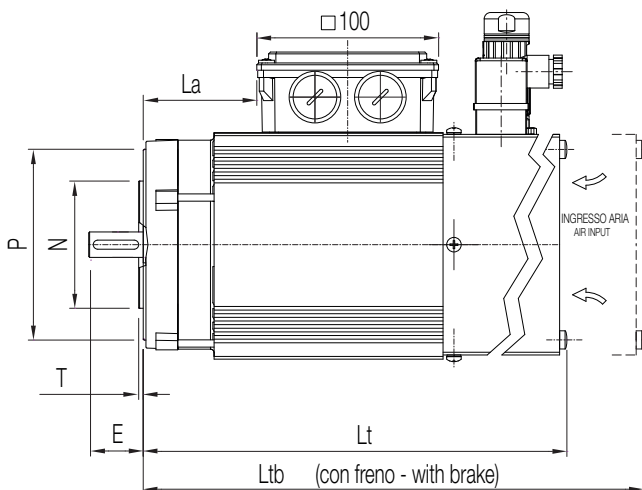
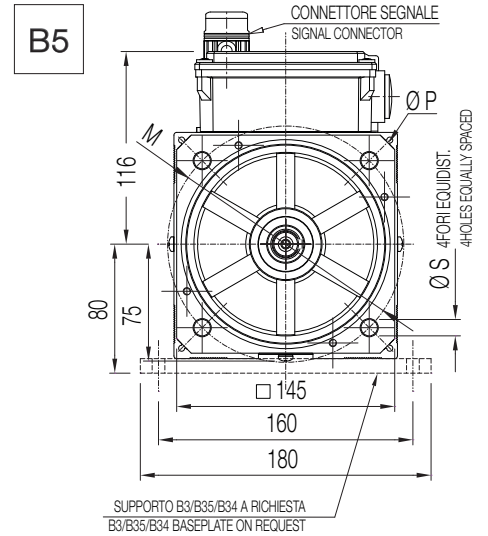
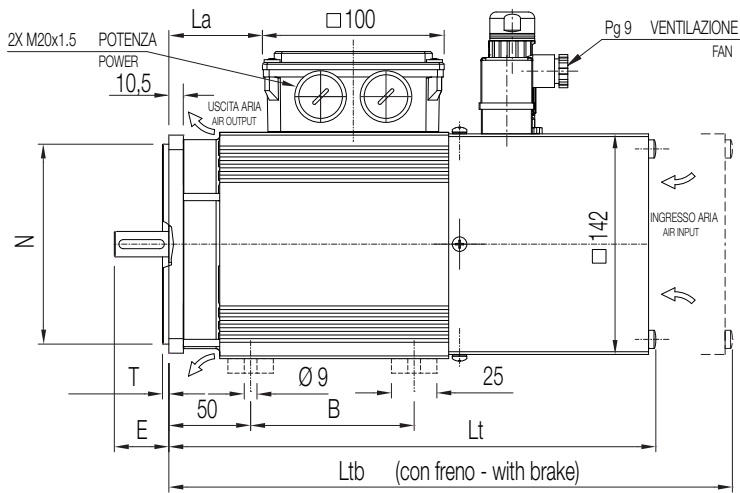


Tipo Type			Lunghezza Length				Albero Shaft								Flangia Front flange						
			B	La	Lt	Ltb	D (1) (2)	E (1) (2)	GA (1) (2)	F (1) (2)	d (1) (2)	P	N	T	M	S					
VT 71	M	B5	90	51,5	270	312	14j6	19j6	30	40	16	21,5	5	6	M5	M6	160	110 j6	3,5	130	9
	L	B14	90	62,5	281	323	14j6	19j6	30	40	16	21,5	5	6	M5	M6	105	70 j6	2,5	85	M6

(1) Standard (2) Option

Dimensioni di ingombro VT 80

Overall dimensions VT 80

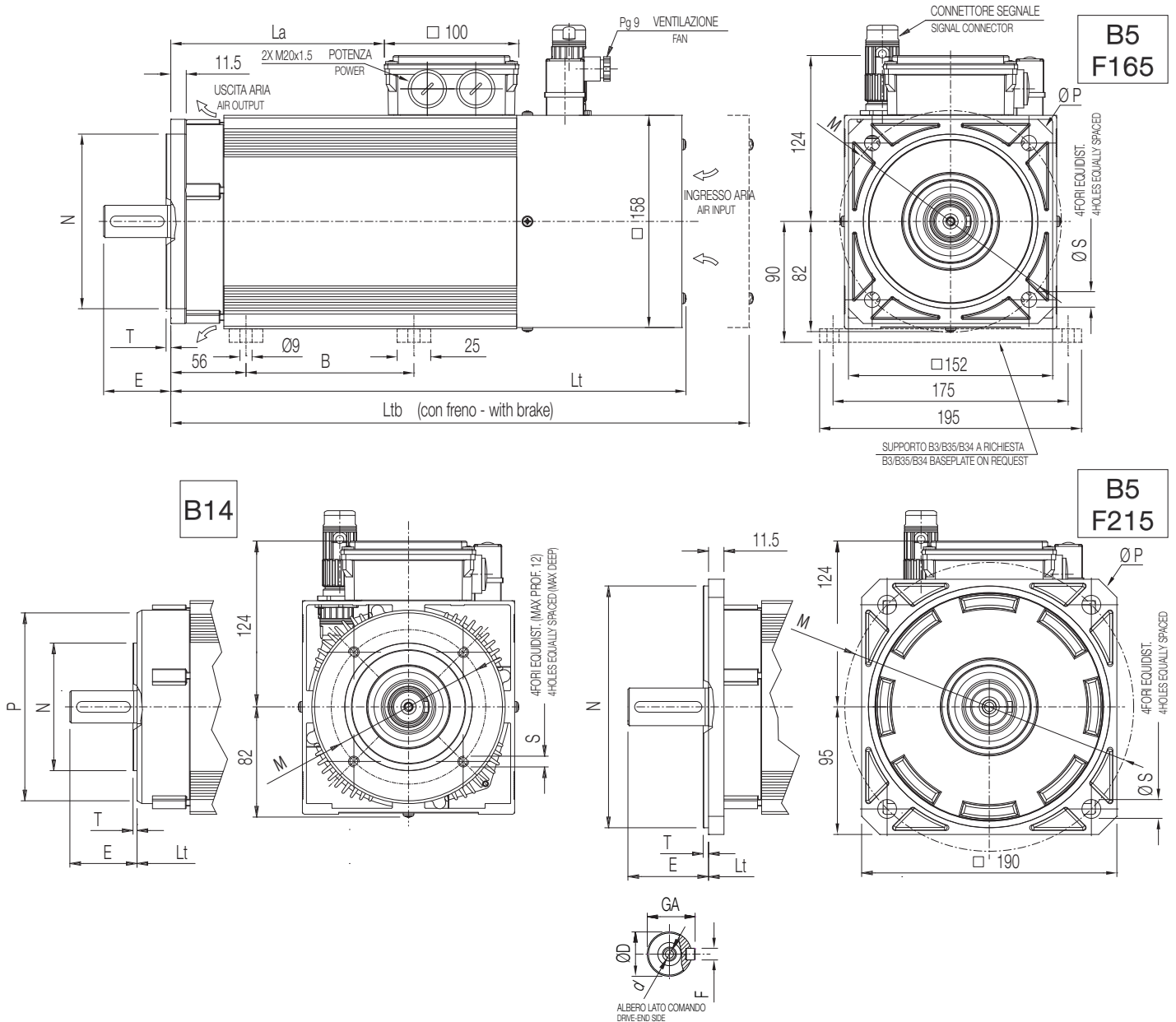


Tipo Type			Lunghezza Length				Albero Shaft						Flangia Front flange								
			B	La	Lt	Ltb	D (1) (2)		E (1) (2)		GA (1) (2)		F (1) (2)		d (1) (2)		P	N	T	M	S
VT 80	S	B5	100	78	285	325	19j6	24j6	40	50	21,5	27	6	8	M6	M8	200	130 j6	3,5	165	11
	L	B14	-	78	285	325	19j6	24j6	40	50	21,5	27	6	8	M6	M8	120	80 j6	2,5	100	M6

(1) Standard (2) Option

Dimensioni di ingombro VT 90

Overall dimensions VT 90



Tipo Type			Lunghezza Length				Albero Shaft					Flangia Front flange				
			B	La	Lt	Ltb	D	E	GA	F	d	P	N	T	M	S
VT 90	S	B5 / F165 (standard)	100	84	294	344	24	50	27	8	M8	200	130 j6	3,5	165	11,5
	L		125	119	345	395										
	P		125	159	385	435										
	X		185	229	455	505										
VT 90	S	B5 / F215 (option)	100	84	294	344	28	60	31	8	M10	250	180 j6	4	215	13,5
	L		125	119	345	395										
	P		125	159	385	435										
	X		185	229	455	505										
VT 90	S	B14	-	84	294	344	24	50	27	8	M8	140	95 j6	3	115	M8
	L		-	119	345	395										
	P		-	159	385	435										
	X		-	229	455	505										